



# Queen common wasp

*Vespula vulgaris*

## What to look for

The queen is the first wasp you'll see in early spring when she searches for a nesting site

She has the familiar vivid yellow and black stripes, triangular head and sting of the smaller workers

The queen is about 20 - 25mm, workers 11 - 14mm



## Where found

Nests are usually only seen as tiny entrance holes, usually underground but also in cavities in walls, ceiling, logs and trees

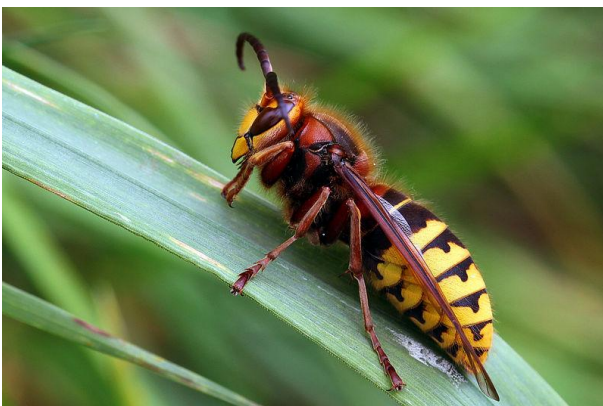
Wasps are attracted to sweet food and drinks

## When to look

Early spring - queens appear from February

## Not to be confused with

The European hornet (*Vespa crabro*)



### Did you know?

Wasps help to balance nature by removing thousands of aphids, caterpillars and fly larvae

They pollinate plants and recycle nutrients through scavenging

Unlike bees, wasps have no wax glands and construct their nests out of chewed wood mixed with their own saliva. They scrape off small pieces of wood with their powerful jaws, making a sound audible to the human ear

Wasps are eaten by spiders and badgers

In about 422 BC the Greek comedy writer Aristophanes wrote a satirical play called "The Wasps"

More great wildlife factsheets to download: [www.naturescalendar.org.uk/factpacks](http://www.naturescalendar.org.uk/factpacks)



Help us develop more resources like this:  
[www.naturescalendar.org.uk/help/support.htm](http://www.naturescalendar.org.uk/help/support.htm)

